



# Creative Christmas





# Welcome to your Creative Christmas pack!

For the first time in 16 years we were unable to bring you our wonderful summer Festival. We were so disappointed but, as we all know, it was unavoidable. We did try to make amends by taking part in the distribution of the summer art boxes.

Christmas approaches and, as there is still no change in the Covid virus situation, once again our children are going to miss out. We received some funding from Awards for All and after talking to our friends and partners at Cartwheel Arts we have decided to offer the children in our four primary schools this creative activity box. We are very grateful to The Guinness Partnership for also making a contribution to the project.

Inside each little box you will find an activity for each day of your Christmas break, 16 in all, and the materials to help you achieve them. They have been put together by some of our great team of artists. I am sure you will enjoy trying each one and we would really like to see your art work in the New Year.

On behalf of all of us who work with the Darnhill Festival Association I would like to wish you all a very happy Christmas. It may be different this year but it can still be fun.

Take care and stay safe.  
Best wishes

Kathleen, Barbara, Tricia, Joan, Lucille, Ann and Viv.  
Darnhill Festival Association



## A note from Cartwheel Arts

We would like to thank the Darnhill Festival Association and The Guinness Partnership for supporting this art box project. A big thank you also to designer Lily Norwood ([lilynorwood.com](http://lilynorwood.com)) who gifted her time to design this wonderful booklet, and to our friends at Bamford Print for creating and packing all of the boxes. The activities have been produced by our artists Abi, Laura, Charlotte, Oliver and Natalie, and you can find out more about them on the back cover.

We hope that you enjoy using this pack as much as we have enjoyed putting it together. There is an activity for every day of the school holidays and you should find almost everything that you need to carry out the activities in the box.

We would love to see your creations so please do share them with us on social media (see back page for details).

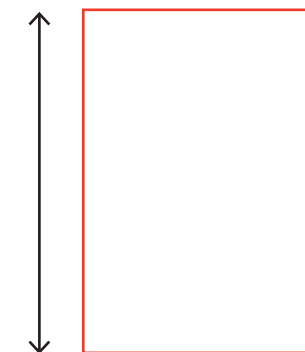
We wish you a happy and peaceful Christmas

The Cartwheel Arts Team

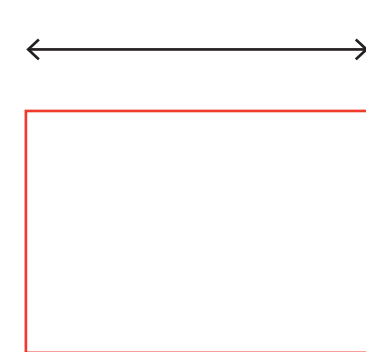
---

## Remember!

Portrait means this way up



Landscape means this way



# Design your own Yule Lad

## Christmas around the world

In the country of Iceland, they have an old Christmas fairy tale about 13 small and cheeky elf-like characters called the Yule Lads. It is said that each mischievous ‘lads’ come to town one by one over the 13 days leading up to Christmas. Excited Icelandic children would leave a shoe out in the hope that they would receive a sweet treat in it from the Yule Lads for good behaviour.

But! if they had misbehaved, they would receive an old potato!

## Materials

- A4 paper
- Pen or pencil
- Colour pencils or felt tips



## Instructions

What do you think these little cheeky guys looked like? Read the names and descriptions of each one and using the paper from your pack draw what you think each character looked like. They can be as silly as you like!

Stubby	a small lad who steals food out of people's pans!
Pot Scraper	he pinches dirty plates and licks them clean - eww!
Door Slammer	he likes to slam doors and make lots of noise, keeping everyone awake!
Bowl Licker	he eats bowls of food from people's tables!
Sheep-Cote Clod	he sneaks into farmer's sheds and drinks sheep's milk!
Sausage Swiper	he loves stealing sausages!
Window Peeper	he peeks through windows to see what he can take!
Gully Gawk	he drinks cow's milk straight from the farmers bucket!
Candle Beggar	he likes to steal candles!
Spoon Licker	guess what this lad likes to lick?
Door Sniffer	he has a huge nose and pinches people's bread!
Meat Hooks	he loves to snatch people's meat, especially roast lamb!
Skyr Gobbler	'Skyr' means yoghurt, and this cheeky lad wants everyones!



# Twisty Candy Cane Decorations

## **Materials** (Makes 4 mini candy canes.)

4 pipecleaners & scissors

Scissors

---

## **Instructions**

1. Cut all the pipe cleaners in half, so that you have 8 pieces.
2. Take 2 different coloured pieces and twist around each other from the top to the bottom.
3. Bend the top part over to create a hook shape (see photos)
4. Repeat another 3 times so that you have 4 mini decorations to hang on your Christmas tree or around the house!!





# A Letter to an Elf!

## Materials

Scissors  
Pens  
Glue  
Sticky tape

Letter template  
Envelope template

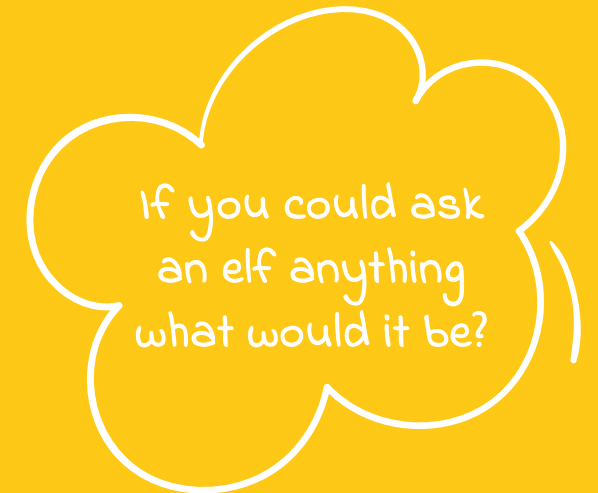
## Instructions

1. Cut out the envelope from the template found in your box and glue where shown.
2. Fold the glued part (Part 1) first, then fold down Part 2 & 3 onto it to secure. Part 4 will be the opening to pop in your letter.
3. Add the Elf's address and add the stamps to decorate!
4. Cut out the letter template, write your letter and fold along the dotted lines.
5. Place in the envelope and leave somewhere magical.



Creative Christmas

HERE'S SOME IDEAS TO GET YOU STARTED:



# Santa Puppet

## Materials

1 white card Santa puppet template, which includes Santa's face with two handle strips.

Felt tip pens

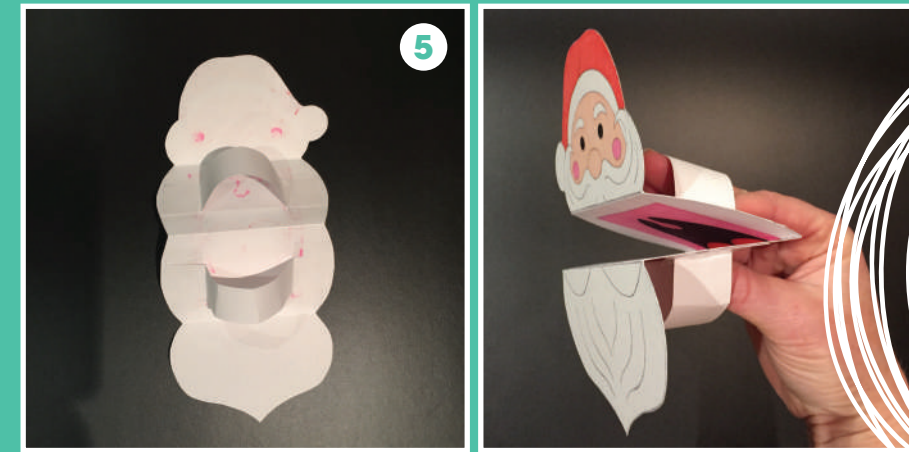
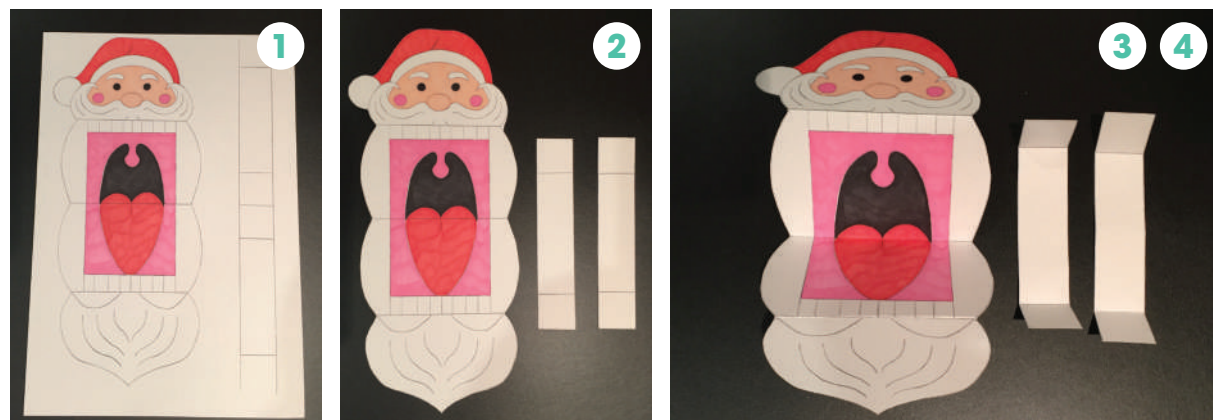
Scissors

Glue stick

Sticky tape

## Instructions

1. Colour in Santa.
2. Carefully cut out Santa and the two rectangular handle strips.
3. Carefully fold the puppet in half along the line in the middle of the mouth, then fold the face upwards along the line above the top teeth, then finally fold the beard downwards along the line at the bottom of the lower teeth.
4. Fold along the lines next to the square ends of each of the two handle strips, then apply glue to these areas.
5. Position the handles onto the back of the mouth area of Santa's face, attaching one above and one below the fold, ensuring both form an arch. Secure each end with a piece of sticky tape.



The puppet is now complete, simply place your fingers through the top handle with your thumb through the bottom and open and close your puppets mouth with your hand to operate.





# Christmas Lantern

## Materials

White paper template 1, which includes the outer lantern with the Christmas design

White paper template 2, which includes the handle and blank lantern centre

Felt tip pens

Scissors

Glue stick

Sticky tape

## Instructions

1. Colour in the lanterns Christmas design leaving the plain rectangles at the end next to the snowflake rectangles blank on the first template.
2. Colour in the handle strip on the second template leaving the larger lantern centre section blank.
3. Fold the first template in half along the middle horizontal line.
4. Carefully cut along the vertical lines from the middle fold up to the line of the strip at the bottom.
5. Cut out the blank rectangular section at the end of the lantern design next to the snowflake section, ensuring not to cut the bottom part of the strip directly below.
6. Carefully cut along the line between the handle and the blank central piece of the lantern on the second template.
7. Open out the outer lantern from the first template, turn over to the back of the sheet and apply glue to the uncut top and bottom strip sections.
8. Turn the lantern sheet the right way around and line up and attach the top of the lantern to the top of the blank lantern centre piece from the second template.
9. Repeat with the bottom section.
10. Bring the lantern's sides together by forming a tube in the central part of the lantern, then secure the top, bottom and middle section where the lantern edges meet with sticky tape.
11. Sticky tape the ends of handle inside the top of the lantern centre opposite one another.



# Reindeer Headpiece

## Materials

White card reindeer headpiece template 1, which includes the reindeer's face with an attached head band

White card reindeer template 2, which includes the reindeer's antlers and two head band extenders

Felt tip pens

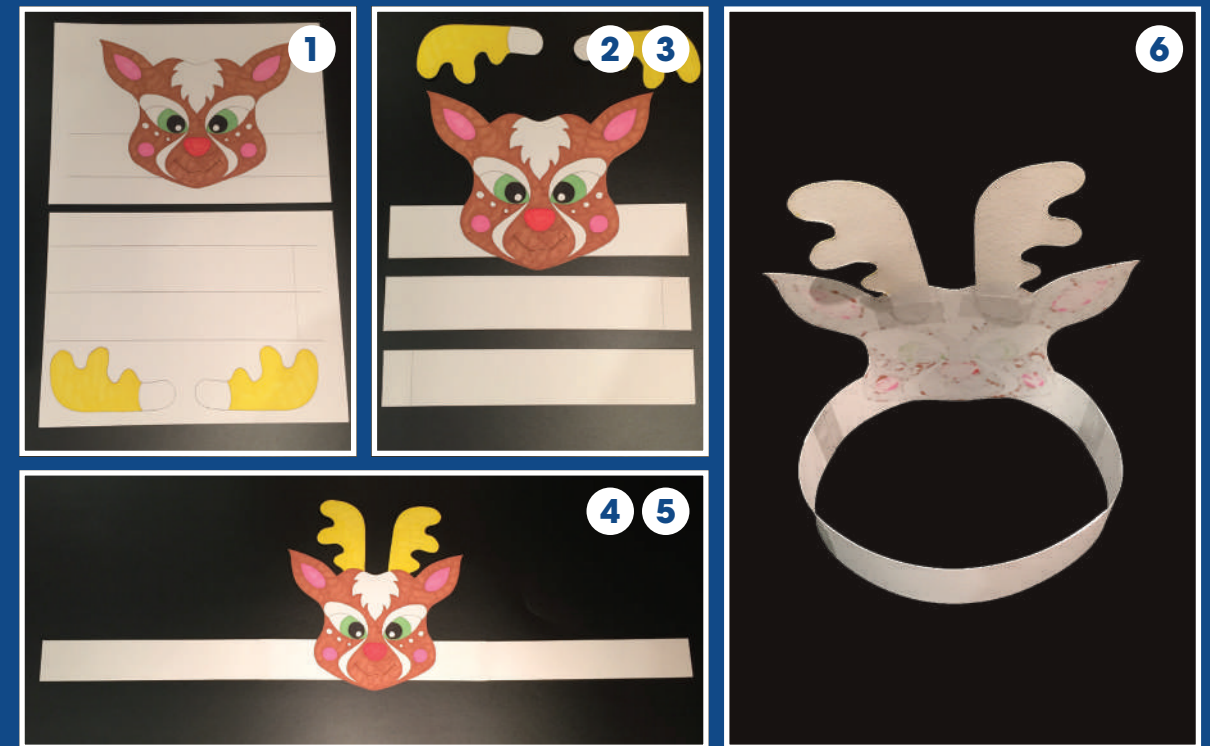
Scissors

Glue stick

Sticky tape

## Instructions

1. Colour in the reindeer's face on the first template and the antlers on the second template.
2. Carefully cut along the outline of the reindeer's face and attached head band on the first template, ensuring that both remain joined together.
3. Carefully cut out the antlers and the two head band extenders on the second template.
4. Apply glue to the ends of both the antlers and attach them to the back of the reindeer's head, then secure both in place with a piece of sticky tape each.
5. Apply glue to the rectangular ends onto each of the head band extenders from the second template, then attach one to each side of the back of the reindeer's head band from the first template. Secure the joins with a piece of sticky tape on both ends, at the front and back of the headpiece.
6. Place the headpiece around your head and measure where your band needs to be joined together in order for it to fit properly. Hold the bands in position and sticky tape in place.





# Christmas Crackers

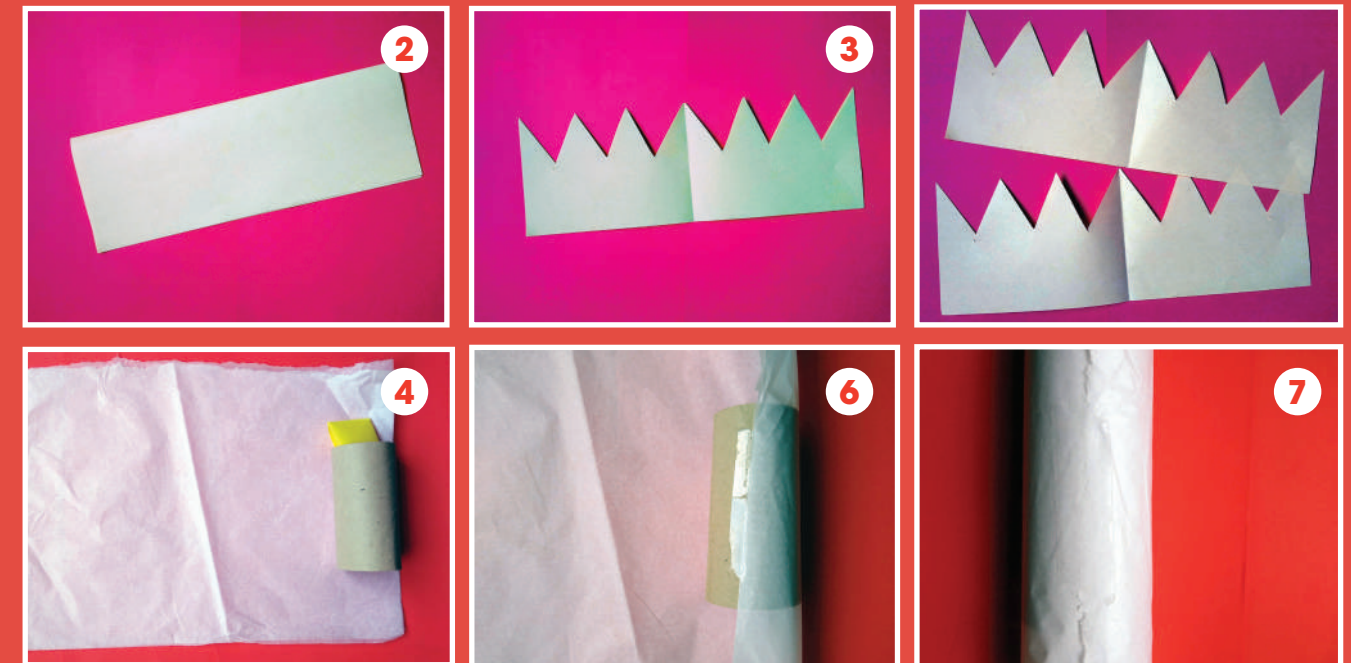
## Materials

Toilet roll tubes  
Scissors  
Sticky tape

A4 tissue paper  
String  
A4 paper

## Instructions

1. Write lots of facts or jokes out on plain paper, or make small gifts to go into your crackers.
2. To make a paper crown for inside your cracker take a piece of A4 paper and fold it in half portrait ways so you have a long rectangle.
3. Along the folded edge cut triangles out to about half way down your rectangle. Cut in half along the fold. You will now have 2 long strips. Sticky tape the ends together so you have a paper crown.
4. Put a piece of A4 tissue paper out horizontally in front of you. Take a toilet roll tube and put it at the end of your paper.
5. Put your joke & hat inside of the toilet roll tube.
6. Sticky tape the tissue paper end to your toilet roll tube and start to roll.
7. Once the tissue paper has run out, stick the other end down to the tube.
8. Take the ends of the tissue paper and twist them to create a cracker shape. Cut a length of string to tie around the gathered bits.
9. Decorate the cracker anyway you like.



# Stain glass Tree

## Materials

1x A4 black card

Blue and green tissue paper

Glue

Pencil

Scissors

## Instructions

1. Place a black piece of card portrait way up and draw the shape of a tree in the centre of the page.
2. About an inch inside your design, repeat this pattern by following the shape of the first tree so that you have 2 trees with an inch gap between them.
3. Fold your black card in half (still portrait way up) and with the pencil lines on the outside of the card.
4. Cut out the shape of the tree out by following your first line using a pair of scissors (this is the line on the outside).
5. Now repeat this, but this time following the line on the inside of the tree (this will leave you with a black tree template roughly an inch thick).
6. Stick your black tree template onto a sheet of blue tissue paper using glue.
7. Using a pair of scissors cut around the tree template, leaving an inch of blue tissue paper all around the tree.
8. Take the green tissue paper and tear/shred or cut lots of different shapes (you can always use other colours too if you want to make it more colourful).
9. Once you have a nice pile of tissue shapes, fill your tree with glue and stick the shapes down staying within the black template.
10. Place your Stain Glass Tree in a window that the light shines through.





# Snowman Spiral Mobile

## Materials

1 white card snowman mobile template, which includes the snowman's head, body and arms.

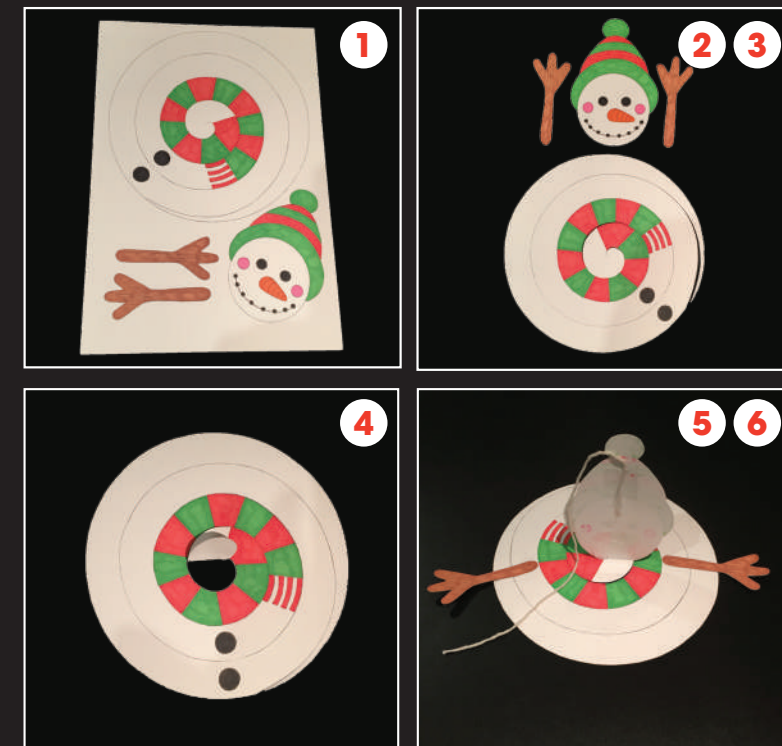
Felt tip pens

Scissors

Glue stick  
Sticky tape  
String

## Instructions

1. Colour in the Snowman's head, buttons, arms and scarf, leaving the last section in the middle of the spiral above the scarf white.
2. Carefully cut out the circular body, then carefully cut along the spiral line within. Stop before the final cut - don't cut out the white bit in the middle.
3. Carefully cut out the snowman's head and arms.
4. Fold the white section above the scarf upwards and apply some glue.
5. Attach the head onto the white section above the scarf and secure the join at the back with a piece of sticky tape.
6. Stick the arms onto either side of the snowman's body below the scarf area with sticky tape.
7. Stick a piece of string to the back of the snowman's head with sticky tape.



# Gingerbread House



## Materials

X A4 Blue piece of card  
1x A4 Green piece of card  
1x A4 Yellow piece of card  
Felt tips

Scissors  
Glue  
Sequins

## Instructions

1. Cut a long strip of green card for the grass about 4 inches deep.
2. Using glue stick the green strip of grass onto the bottom of a blue piece of card, portrait way up (this will be your background for the Winter Wonderland).
3. Take a yellow piece of A4 card, place it landscape way up and fold the edges into the centre of the page to create a double door effect.
4. Draw an archway at the top of the door with a pencil.
5. To shape the door cut out the archway with a pair of scissors.
6. Place the door onto the blue and green background at the bottom of the page and slightly to the left.
7. Once you are happy with the position of the house stick it down with glue so that the doors open outwards.
8. Using felt tips, decorate the front of your house. You might want to include a door and a window.
9. Now your background is complete, it's time to create your character(s) and any extras you might like (I have added a Gingerbread man, a sun, a tree and some candy canes).
10. Draw, cut out and colour your added extras and arrange them creatively inside and outside of the house.
11. Use the glue stick to stick any pieces down.
12. Add sequins to finish off your picture if you want it to look shiny like mine.
13. Why not give your Gingerbread Person/House a name and add some birds into the sky with a black felt tip.
14. Stand your Gingerbread house up by opening the doors.



# Hedgehog Art

## Materials

1x Hedgehog template  
 1x Lolly pop stick  
 Collected leaves (or A4 paper to draw your own)  
 Brown and black felt tips  
 Glue  
 Scissors

## Instructions

1. Collect leaves of different shapes, sizes and colours.
2. Wash and dry out the leaves.
3. Take a pair of scissors and cut out the template of the hedgehog.
4. Colour the hedgehog's face with a brown felt tip.
5. Using a black felt tip colour over the eye, mouth and nose of your hedgehog.
6. Fill the hedgehog's body with a thin layer of glue or sticky tape.
7. Take your leaves and place them onto the glue area creating a spikey 3D look to the hedgehog's back.
8. Take a lolly pop stick and using the glue stick this on the back of the hedgehog.

### TIP:

If you do not have access to Nature or leaves then this activity can be created by drawing and colouring in your own leaves.



# Paper Wreath

## Materials

Coloured paper  
Glue  
Scissors  
Leaves

Card  
Sticky tape  
String  
Paint

## Instructions

1. Go and collect leaves - Make sure to get sturdy leaves and try to get some big ones. Leave the leaves to dry.
2. Paint the surface of the leaf with a colour of your choice.
3. Put the leaf onto the coloured paper painted side face down and rub the back pressing down quite firmly. Try to be careful not to break the leaf and make sure you rub all the way to the edges!
4. Repeat this with other colours as many times as you would like.
5. Wait for all the leaf prints to dry and then carefully cut out all your prints of leaves.
6. Take the card out of your pack, or use a larger piece of card from a cardboard box like a cereal box. Get something circular to draw around - like a big plate. Draw around the plate so you have a large circle that fills up your piece of card.
7. Take a smaller plate and draw another circle in the inside on the large circle so you have a circular band about 8cm wide..
8. Cut out this circle - you might need a bit of help from a grown up for this.
9. Start to stick your leaf prints onto your cardboard ring in an arrangement that you like. Overlap them so you don't see any of the cardboard ring.
10. Add in some of your real leaves if you would like to, the painted ones will look nice as well.
11. Tie some string through the wreath so you can hang it in your home.





# Magical Toadstools

## Materials

1x A4 piece of red card  
1 piece of white card  
Pencil  
Scissors  
Glue stick

Something circular to draw around  
(for example, a small plate, mug etc)  
A small stick from nature  
A small amount of green moss from nature (optional)

## Instructions

1. Using a pencil or pen draw around a circular object such as a mug, to create a circle on the red card. Cut out.
2. Cut a triangle shape out of the circle as shown in photograph 1.
3. Glue along one edge as shown in photograph 2 and bend to form a cone shape and hold in place for several seconds. (Shown in photograph 3)



4. Whilst this is drying, cut out lots of small circles from the white card, then glue in place all over the toadstool to decorate.
5. Finally, add glue to one end of the stick, prop it up upright (it may help to lean it against something) and place the cardboard toadstool on top. Leave to dry until secure.
6. Once dry, make a magical indoor toadstool garden by placing in a pot or container of soil, moss or stones on your windowsill! Glue little bits of moss to make your toadstool look even more natural and magical!

Warning!  
You should never touch  
a real toadstool that  
looks like this (Fly Agaric  
mushroom) as they are  
poisonous!!

## You Could Also...

Use the inside of egg cartons instead of the card!

Paint or colour in red and decorate.



# Mindful Winter Wonderland

## Materials

1x A4 white sheet paper  
1x A4 blue sheet card  
Pencil

Felt tips  
Scissors  
Glue

## Instructions

1. Take an A4 sheet of white paper.
2. Draw a tree shape in the middle of the page.
3. Fill the tree with lots of wiggly lines and swirls.
4. Using a pencil, draw 2 long lines for the hills.  
  
For the first hill, draw a line from the left-hand side of the paper and run it down to the right-hand side of the paper making sure you pass just underneath the roots of your tree.  
For the second hill, begin your line on the right-hand side of the tree and run it up and along to the right-hand side of the paper. (The hills can be as big or as little as you like)
5. In the top right-hand corner of the paper draw a semi-circle for the sun and some lines running down to create the rays of sunshine.
6. Fill the sun create with lots of swirls. For extra effects why not add a second tree in the distance, or a house?
7. Using felt tips, colour in your winter wonderland mindfully. This means using your full concentration and trying to keep your mind on colouring.
8. Once you are happy with your coloured-in winter wonderland, take a pair of scissors and cut around the tree(s) and the sun leaving about a 2 inch gap all around everything. This will create a blanket of snow to your picture.
9. Stick your cut-out winter wonderland onto a blue A4 sheet of card using the glue.





# Winter Nature Walk

## Materials

Coloured paper  
White paper  
Pencil crayons  
String

## Instructions

1. Take a few sheets of A4 paper and fold them in half.
2. Take a piece of string and tie it around the centre of the paper to make a small book.
3. Decorate the front of your book.
4. Go for a walk outside. Always check with your grown up first.
5. Try and find leaves that are still alive in the winter – see if you can find any birds and insects too . Have a look up at the sky and look at the shapes of the clouds. What colour is the sky today?
6. When you get home try and remember things you have seen and draw pictures of them in your book.
7. Add to your book whenever you feel like it to document your winter walks. If your pages get full up you can always add more paper.





# Thankfulness Calendar

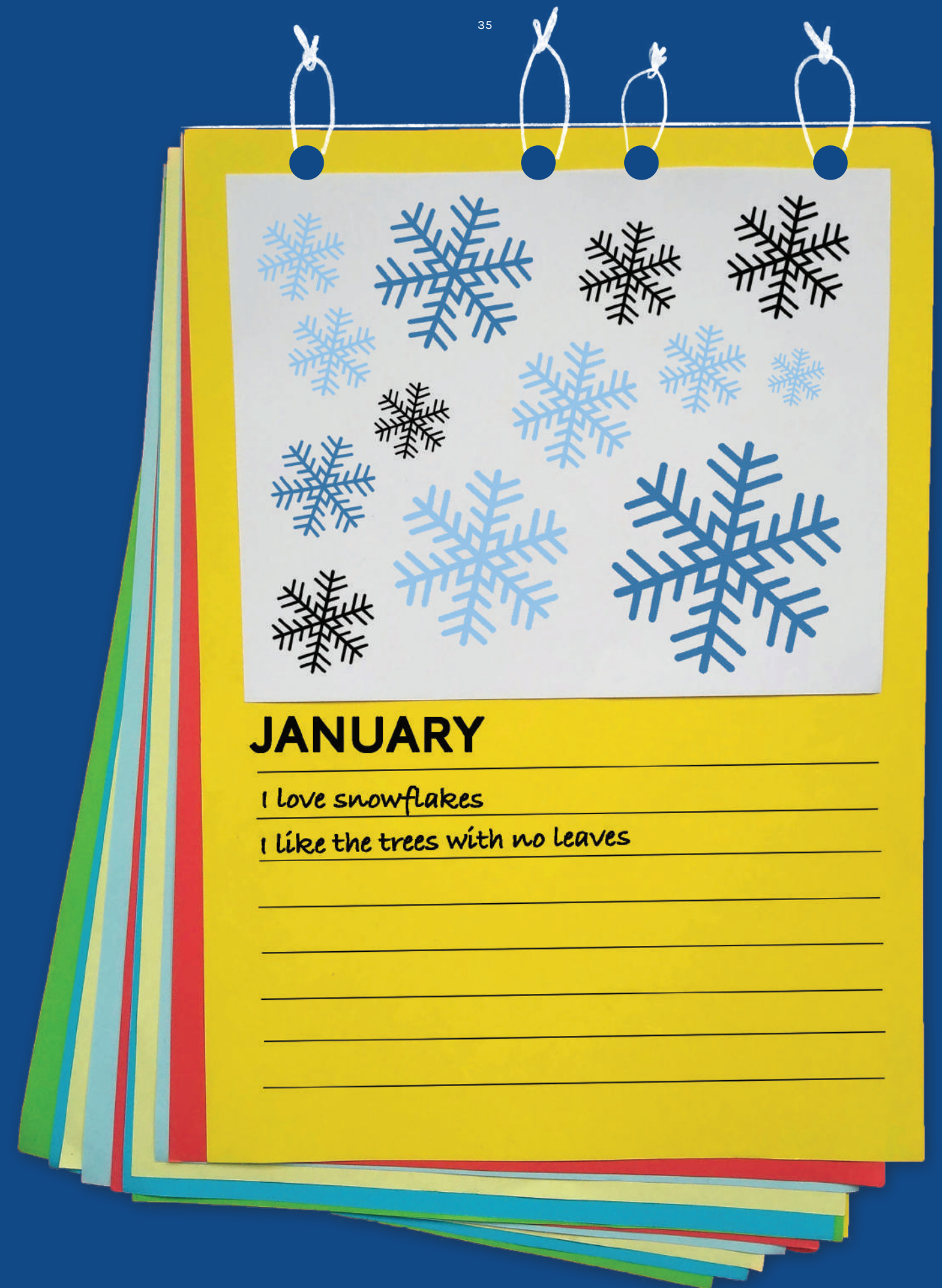
## Materials

Coloured paper  
Glue  
String

Ruler  
Pencil crayons  
Scissors

## Instructions

1. Get 12 pieces of different coloured sheets of A4 paper and set them aside.
2. Take 6 pieces of white A4 paper and cut them in half down the middle.
3. At the short edge of the white paper draw a line down it about 3cm from the edge and cut down this line.
4. Draw a picture of things that make you happy on all your 12 pieces of cut white paper. Use lots of colours!
5. Put your 12 pieces of colour paper portrait way up and stick one of your drawings on the top of each one, leaving about a 2cm gap at the top.
6. Put the name of each month underneath your drawing in nice big letters.
7. Underneath draw out lines 2cm apart.
8. Poke 4 small holes into the coloured pieces of paper in the gap above your picture at the top gently with a pencil - you might need a grown up to help with this. Do this on all 12 pieces of paper.
9. Thread string or ribbon through each hole in the top so you have 4 ties. Leave them a bit loose so you can flip your pages.
10. Now each month write down things that have made you happy underneath your pictures.





# Our Artists

**Natalie Linney** specialises in eco print & natural dyes. Using natural and man-made objects found outside she creates print & colour utilising ancient dyeing techniques. Find out more at [www.talielinseed.co.uk](http://www.talielinseed.co.uk). Follow along with her Winter Nature Walk - and why not collect some leaves for the other activities on the way.

**Laura Sutcliffe-Tasker** has worked on the Darnhill Festival for the last three years. You may remember her famous cow masks which featured in the parade last year? Make your own reindeer headpiece using Laura's templates included in your pack.

**Yan Tan Tethera:** Oliver & Charlotte specialise in Storytelling, Environmental Interpretation and Community Engagement. They love stories. They love nature. So they combine the two to engage audiences young and old. Read all about their Yule Lad friends inside. Find out more at <https://www.yantantethera.org>.

**Abi Rogers** is an Emotional Support Worker who works on Cartwheel Art's Art for Wellbeing programme. Abi spent the first lockdown making art videos for our website Draw the Day ([www.drawtheday.org](http://www.drawtheday.org)) - follow along with Abi to Make a Rainbow, a de-stress box and 'I am Great' jar and more.

---

**Follow us & Send pictures of your  
creations to:**

**Twitter** @CartwheelArts

**Facebook** CartwheelArts

**admin@cartwheelarts.org.uk**